

## Warehouse & Office Space

29540 Airport Road, Eugene, Oregon

# FOR LEASE



### HIGHLIGHTS

- 18,300 SF total
- 15,780 SF of air conditioned warehouse
- 2,540 SF of Class A Industrial office space
- 3 dock well doors
- 12 grade level warehouse doors
- Available July 1, 2023

**\$16,495 M/G**

### CONTACT



**Greg Herbert** SIOR-CCIM  
PRINCIPAL BROKER #780303855  
541-912-3232  
greg.herbert@svn.com

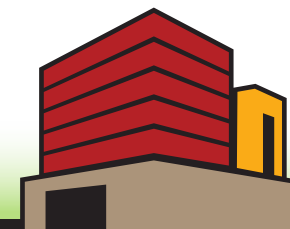
**Brent McLean**  
CCIM, PRINCIPAL BROKER #780303861  
541.913.1031 | brentmcleancre@gmail.com

**John Erving**  
PRINCIPAL BROKER #200701086  
541.914.5255 | johnervingcre@gmail.com  
LICENSED IN THE STATE OF OREGON

## WAREHOUSE & OFFICE SPACE

Air conditioned warehouse with 3 dock well doors and 12 grade level warehouse doors. Additional heating in warehouse as well. Class A industrial office space with HVAC. Entire space is fire sprinklered.

Information above has been obtained from public records, and the current owner(s) of the subject property. The listing broker has not independently verified the accuracy or completeness of any information obtained from sources reasonably believed by the broker to be reliable. Interested buyers should inspect the property carefully and verify all information to their own satisfaction.



eugenecommercial.net

**EUGENE COMMERCIAL REAL ESTATE**



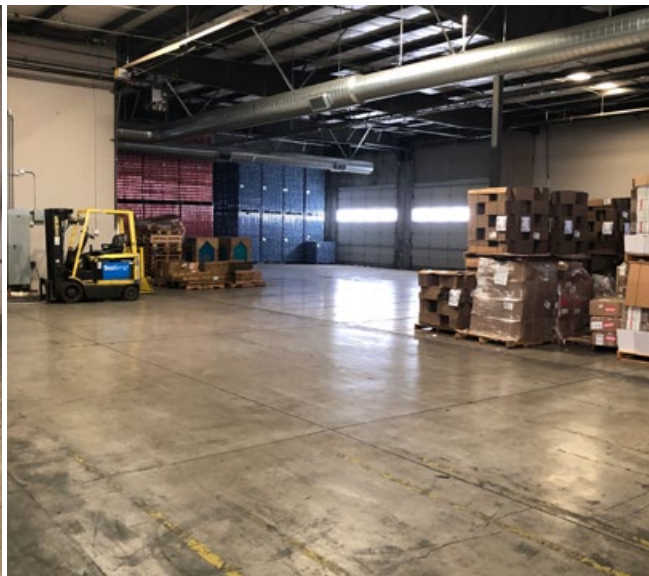
3 Dock High Doors with Levelers



Office Parking Area



Dock Doors and Levelers



Heated and Air Conditioned Warehouse



Typical Warehouse space



Electrical Service



Office & Mezzanine area



Warehouse from mezzanine

